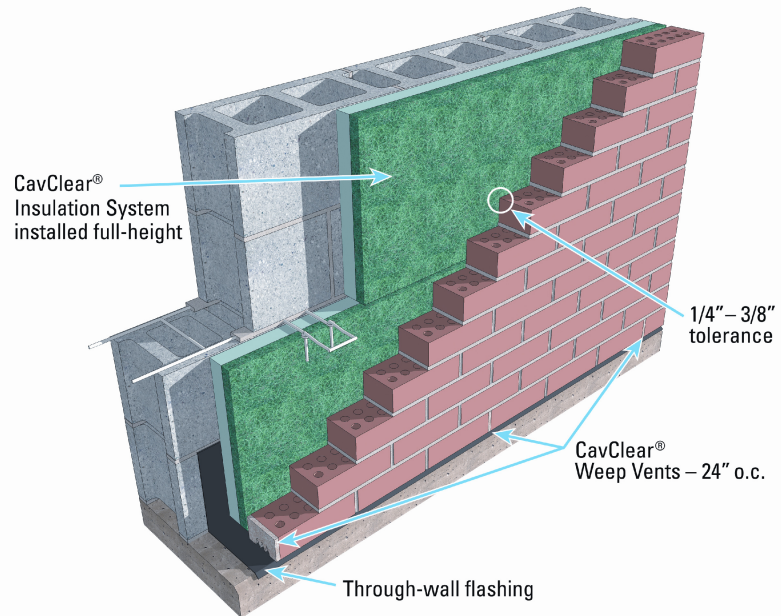


Typical Drainage Wall Using CavClear® Insulation System

Product Overview

A properly functioning drainage system is the prerequisite for a masonry design to achieve maximum thermal efficiencies and reduced maintenance and repair costs. Mortar obstructions and droppings which impede drainage are completely prevented by installing full-height protection using CavClear® Insulation System.

The CavClear Insulation System features the CavClear Masonry Mat factory bonded to rigid insulation. The Masonry Mat will not allow mortar to make contact with the insulation. The CavClear Insulation System is installed full-height behind brick or stone in an insulated masonry wall to provide a continuous drainage area.



Features and Benefits

- Helps prevent mold, mildew and other moisture-related failures.
- One-step, fail-safe installation to eliminate weep obstructions and ensure a continuous drainage path.
- Prevents mortar bridges, minimizing thermal and moisture transfers between the wythes.
- Reduces material costs by substantially reducing mortar waste.
- Reduces long-term life-cycle costs by maximizing thermal efficiencies and reducing maintenance and repair.
- Assures proper drainage even when a smaller-than-desired cavity width is necessary due to project requirements.

Size and Dimension

The CavClear Insulation System is available with most insulation types and any thickness CavClear Masonry Mat ($\frac{3}{8}$ ", $\frac{1}{2}$ ", $\frac{3}{4}$ ", 1", $1\frac{1}{4}$ ", $1\frac{3}{4}$ ").

Piece dimension is dependent on the insulation type specified/ordered. Most are available in 4' x 8' sheets. Convenient 16"x96" sheets may also be available to fit easily between joint reinforcement.

A $\frac{1}{4}$ " to $\frac{3}{8}$ " tolerance between the CavClear Masonry Mat and the masonry veneer allows finger space and variation in actual air space dimension. When ordering or specifying the CavClear Insulation System, indicate both the thickness of the mat and the insulation as well as the insulation type (extruded type or polyisocyanurate type and class).

One-Step Installation

Easy installation makes this product the ultimate air space maintenance and drainage system. Masons simply install insulation in typical manner as brickwork is completed.

Installation

1. Install CavClear Insulation System continuously in exterior masonry cavities during construction of the exterior wythe.
2. Install horizontally between wall ties or joint reinforcement.
3. Stagger end joints in adjacent rows.
4. Butt adjacent pieces to moderate contact.
5. Fit to perimeter construction and penetrations without voids.
6. Do not install more insulation system than can be covered by brick in the same day.