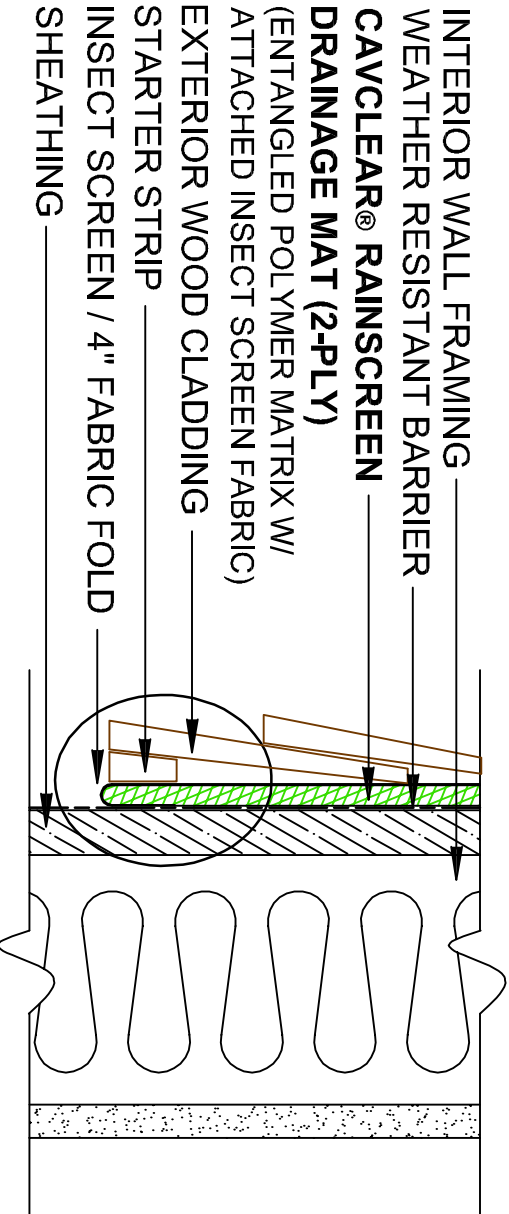
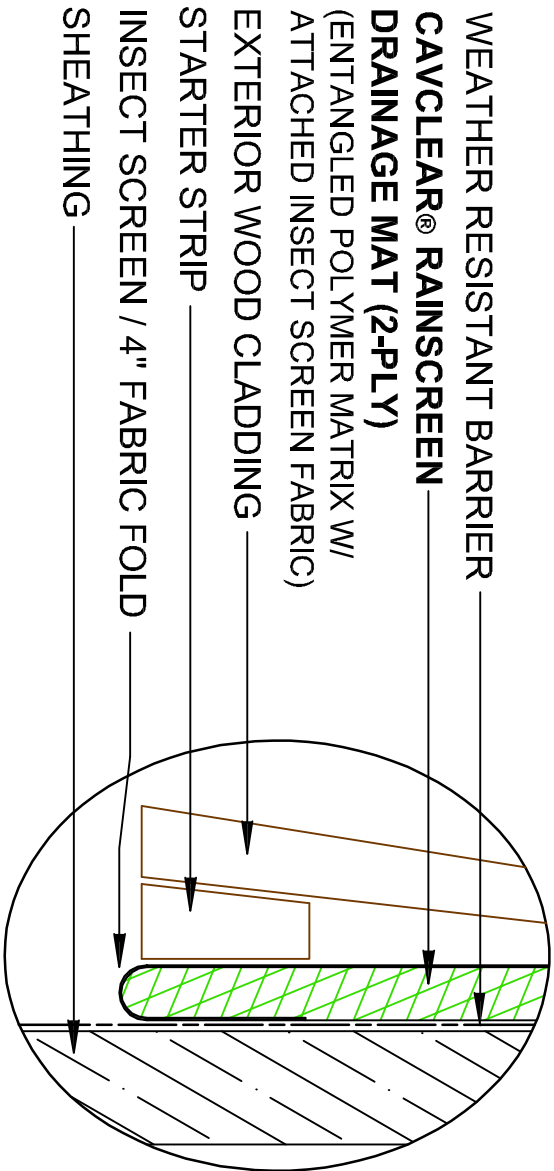


# WOOD CLADDING DETAIL (BOTTOM OF WALL)



INTERIOR WALL FRAMING  
 WEATHER RESISTANT BARRIER  
**CAV CLEAR® RAINSCREEN**  
**DRAINAGE MAT (2-PLY)**  
 (ENTANGLED POLYMER MATRIX W/  
 ATTACHED INSECT SCREEN FABRIC)  
 EXTERIOR WOOD CLADDING  
 STARTER STRIP  
 INSECT SCREEN / 4" FABRIC FOLD  
 SHEATHING



WEATHER RESISTANT BARRIER  
**CAV CLEAR® RAINSCREEN**  
**DRAINAGE MAT (2-PLY)**  
 (ENTANGLED POLYMER MATRIX W/  
 ATTACHED INSECT SCREEN FABRIC)  
 EXTERIOR WOOD CLADDING  
 STARTER STRIP  
 INSECT SCREEN / 4" FABRIC FOLD  
 SHEATHING

NOTE: CavClear® Rainscreen Drainage Mat (Green) should be installed facing the weather resistant barrier, with the insect screen fabric against the wood cladding (facing the exterior wall).

The details and graphics as displayed here are for the express purpose of illustrating basic wall design concepts incorporating CavClear® brand products.



701 Second Street - Hudson WI 54016  
 p: 715-381-5773 w: [www.cavclear.com](http://www.cavclear.com)