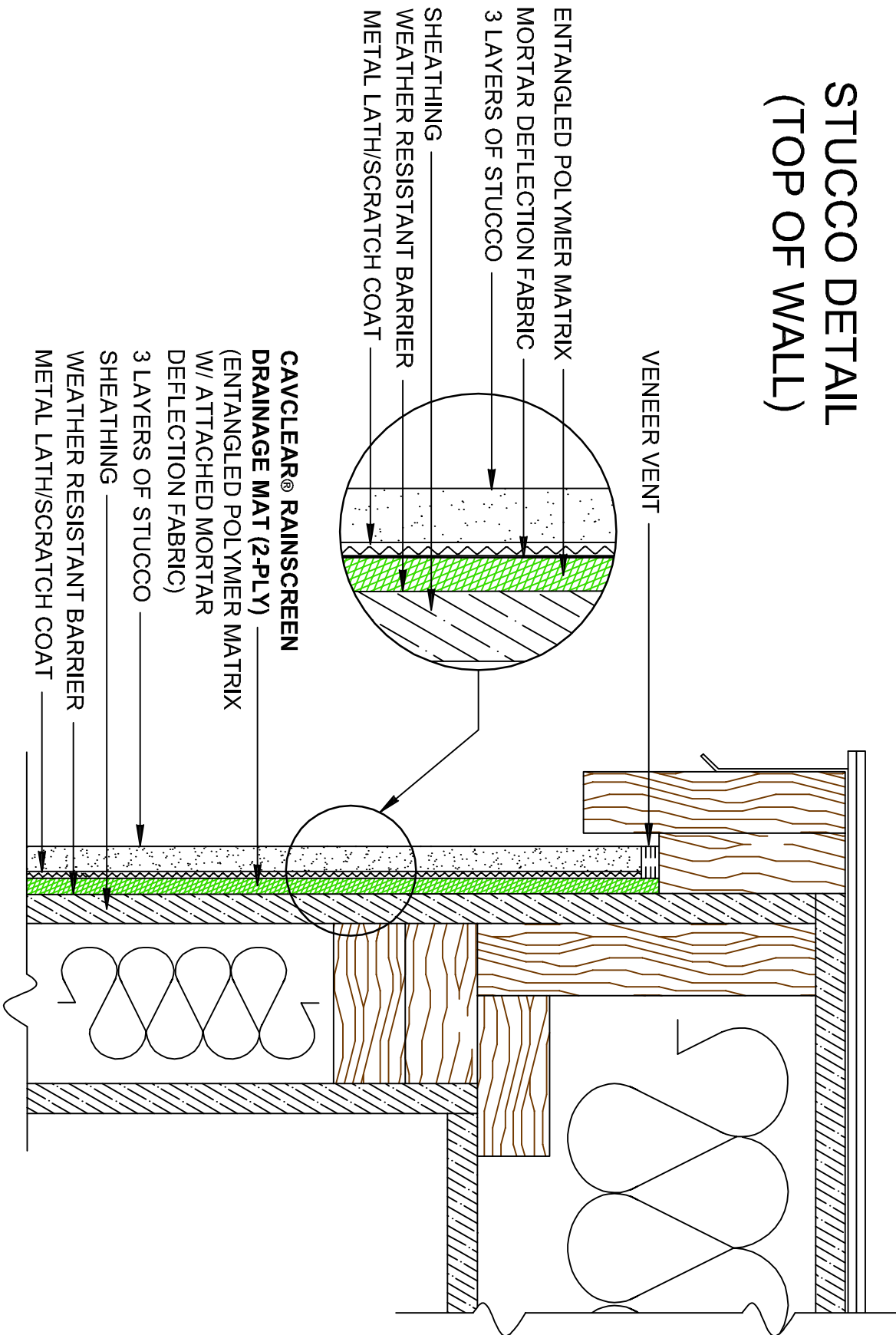


STUCCO DETAIL (TOP OF WALL)



NOTE: CavClear® Rainscreen Drainage Mat (Green) should be installed facing the weather resistant barrier, with the mortar deflection fabric against the metal lath fabric (facing the exterior wall).

The details and graphics as displayed here are for the express purpose of illustrating basic wall design concepts incorporating CavClear® brand products.



701 Second Street - Hudson WI 54016
p: 715-381-5773 w: www.cavclear.com