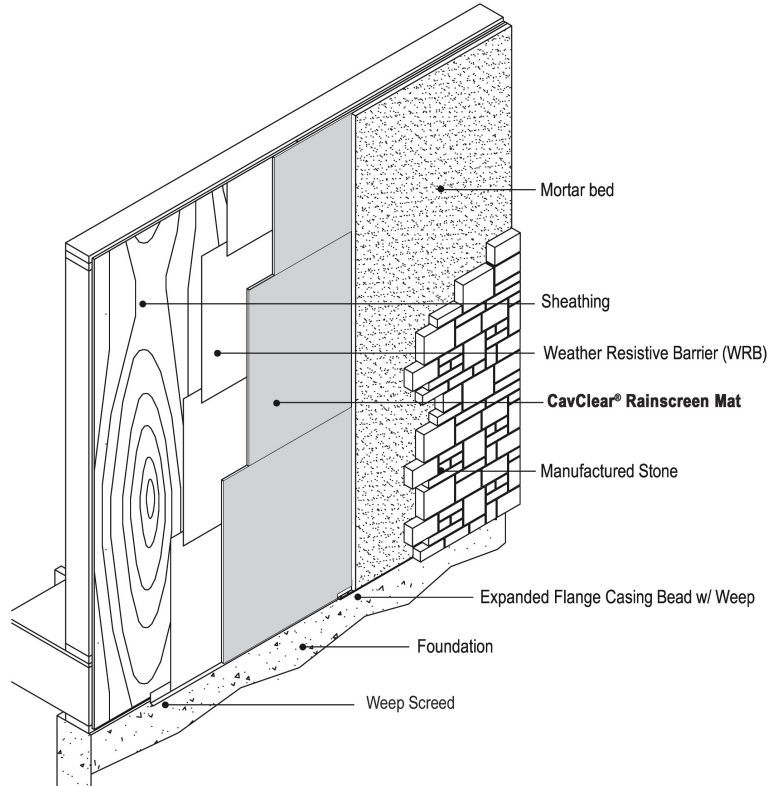


**Typical Drainage Wall Using CavClear® Rainscreen Mat WS**

**Product Overview**

CavClear® Rainscreen Mat With Scrim (CCRS-WS) is designed to be installed behind thin brick, manufactured or thin-set stone and stucco applications to manage moisture and moisture vapor.

It is important to design and construct an effective rainscreen system that will provide a means for drainage and ventilation. Moisture will find its way into exterior wall systems by way of gaps, penetrations, cracks in the surface of the cladding material, and cracked mortar joints. Since it provides the drainage and ventilation function for the system, CavClear Rainscreen Mat WS is an integral part of a successful rainscreen wall design.



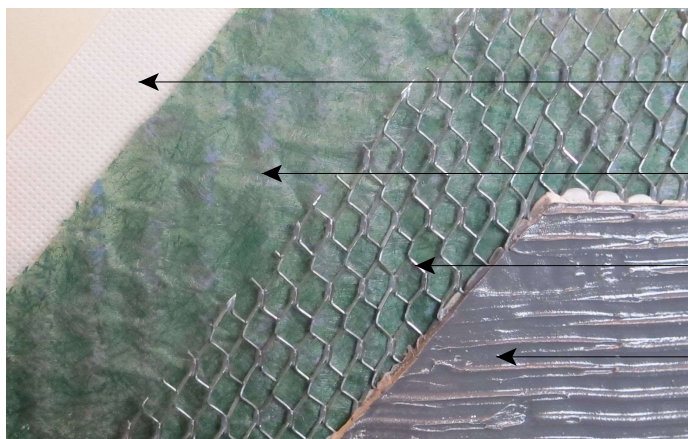
**Features and Benefits**

- 95% open design creates a continuous capillary break and channel for moisture to drain and accelerates drying of the exterior cladding.
- Durable polymer material is resistant to most known corrosive chemicals and does not provide a food source for mold or mildew.
- Made from recycled materials.
- Simple and quick to install. Easier and more cost effective than traditional furring strip methods.
- 2-ply design features a backer fabric that improves the tensile and compressive strength properties of the engineered rainscreen material.
- Integrated insect screen.

**Installation**

- Apply a weather resistant barrier over sidewall sheathing.
- Note: some regions may require two layers of weather resistant barrier. Check local codes for more information.
- Install CavClear Rainscreen Mat WS after windows and doors have been properly installed and flashed. Starting at the base of the wall unroll CavClear Rainscreen Mat WS from right to left with the four-inch fabric flap at the bottom, the three-dimensional polymer matrix against the weather resistant barrier and the fabric facing the exterior of the building. Staple or nail every three square feet.
- On the first (bottom) course only, un-fold the four-inch fabric flap and tuck it between the polymer matrix and the weather resistant barrier to create an insect screen.
- On intermediate courses, butt polymer material together tightly without overlapping. Pull four inch fabric flap over previous course (shingle style) and staple.
- On top course, invert the roll and unroll left to right with the four-inch fabric flap at the top. Unfold the fabric flap and tuck it between the matrix and the weather resistant barrier to create an insect screen.
- Apply exterior cladding over CavClear Rainscreen Drainage Mat WS using manufacturer’s recommended fasteners and spacing.

Physical Data	CavClear® Rainscreen Mat WS	
Thickness	0.25 in / 6 mm	0.4 in / 10 mm
Core Material	Polypropylene	Polypropylene
Roll Length	61.5 ft / 18.75 m	40 ft / 12.19 m
Roll Width	39 in / 99.06 cm	39 in / 99.06 cm
Roll Weight	14 lbs / 6.35 kg	16 lbs / 7.26 kg
Coverage Area	200 sq ft / 18.58 m <sup>2</sup>	130 sq ft / 12.08 m <sup>2</sup>



Weather resistive barrier

CavClear® Rainscreen Mat WS

Wire lath

Mortar Bed

Technical Data	CavClear® Rainscreen Mat WS	
Material Thickness	0.25 in / 6 mm	0.4 in / 10 mm
Density / Specific Gravity (ASTM D 792, Method A)	0.901 g/cm <sup>3</sup>	0.903 g/cm <sup>3</sup>
Porosity (open space) (ECTC TASC00197)	93.8%	95.3%
Mass / Unit Area (composite) (ASTM D 5261 / D 6566)	11.25 oz/sq yd	15.10 oz/sq yd
Hydraulic Transmissivity (ASTM D 4716)	3.70 gpm/ft width	7.01 gpm/ft width
Air Transmissivity (ASTM D 4716, mod)	15.8 cu.ft/min/ft width	54.5 cu.ft/min/ft width
Flame Spread & Smoke Index (ASTM E 84)	Class A Fire Rated	Class A Fire Rated

CavClear® Rainscreen Drainage Mat WS 10mm product meets the physical requirements of Section 9.27.2.2, Item 1b of the 2005 National Building Code of Canada and 2006 British Columbia Building Code.